

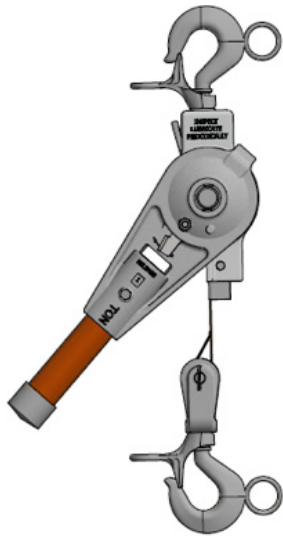
CHANCE® NYLON STRAP HOISTS

Operating & Servicing Instructions:

¼ ton (500 lbs. / 227 kg) Nylon Strap Hoist (Cat. No. PSC3090323CE)

1 ton (2000 lbs. / 907 kg) Nylon Strap Hoist (Cat. No. PSC3090323)

1 ton (2000 lbs. / 907 kg) Nylon Strap Hoist with Hot Stick Handle (Cat. No. PSC3090467)



PSC3090323CE



PSC3090323



PSC3090467

Introduction

Thank you for purchasing a CHANCE® Strap Hoist.

Your safety, and the safety of others, is very important. The warnings and instructions contained in this manual are for your safety. Failure to follow safety warnings and instructions could result in serious injury or death.

All information in this publication is based on the latest product information available at the time of printing. Hubbell Power Systems reserves the right to make changes at any time without notice and without incurring any obligation.

This Owner's Manual must always be kept with the hoist and should remain with the hoist if it is transferred or sold.

These instructions neither cover all details or possible situations in which you may use a strap hoist, nor do they provide for every possible contingency to be encountered in relation to installation, operation or maintenance. Before each use, think through each use, your safety and the safety of others.

Should additional information and details be desired or if situations arise which are not covered adequately for your purpose, please contact Hubbell Power Systems.

Hubbell Power Systems, Inc.
210 N. Allen St
Centralia, MO 65240

(573) 682-5521
www.hubbellpowersystems.com



TABLE OF CONTENTS:

	<u>PAGE NO.</u>
Introduction	1
Table of Contents	2
Important safety information	3
Load ratings	6
Operating Instructions	7
Care Storage and Maintenance	9
Disassembly Instructions	10
Inspection	11
Assembly	12
Testing	12
Parts Diagram	13
Replacement Parts List	14
CE Declaration of Conformity	15



IMPORTANT SAFETY INFORMATION

Read and Understand Owner's Manual Before Use

This Owner's Manual contains important information for protecting yourself and others and preventing equipment problems. Failure to follow these safety instructions and precautions can lead to property damage, serious injuries or death. Always read this entire manual before operating the strap hoist.

The employer or hoist owner is responsible for compliance with all applicable federal, state and local regulations/codes, including NFPA 70E, Standard for Electrical Safety in the Workplace available from the National Fire Protection Association (NFPA) and OSHA regulations. The instructions in the manual are not intended as a substitute for property training or experience in the safe operation of the product. Only competent technicians familiar with the product should install, operate or service it.



Always keep this manual in a safe, accessible location near the strap hoist during operation and maintenance.

Safety Messages

Throughout this manual DANGER, WARNING, CAUTION, NOTICE and the SAFETY ALERT SYMBOL will be used.



This is the safety alert symbol. It is used to alert you to potential personal injury hazards. Obey all safety messages that follow this symbol to avoid possible serious injury or death. It may also have one of the following signal words.

 DANGER
DANGER: Indicates a hazardous situation that, if not avoided, will result in death or serious injury.

 CAUTION
CAUTION: Indicates a hazardous situation that, if not avoided, could result in minor or moderate injury.

 WARNING
WARNING: Indicates a hazardous situation that, if not avoided, could result in death or serious injury.

 NOTICE
NOTICE: Indicates a hazardous situation that, if not avoided, could result in property damage.



SYMBOL INDEX



Entanglement Hazard



Wear Protective Gloves



NEVER use hoist to lift or move persons.



Electrical Shock Hazard



ALWAYS wear head and eye protection.



NEVER walk or stand under a suspended load.



Crush Hazard



Wear Eye Protection



Read, understand and follow the warnings and instructions in this manual and on the hoist.

SAFETY PRECAUTIONS

CAUTION

The equipment covered in this instruction guide must be installed, used, and serviced only by competent personnel familiar with and following good work and safety practices. This equipment is for use by such personnel and is not intended as a substitute for adequate training and experience in safe procedures for this type of equipment.

The information contained in this instruction guide has been compiled as a result of review of the product; its intended application and use considerations. However, this instruction guide does not cover all details or situations in equipment use nor does it provide for every possible contingency to be encountered in relation to installation, operation or maintenance. Should additional information and details be desired or specific situations arise which are not covered adequately for the user's purpose, consult your supervisor and the appropriate rules for safe work practices. If further information is desired, contact Hubbell Power Systems.





This entire book is filled with important safety information—please read it carefully. Before mounting and using your strap hoist, read and follow all mounting instructions and safety messages.

ALWAYS be aware of and comply with all federal, state, and local safety regulations, industry standards, and internal safety guidelines.





NEVER use hoist to lift or move persons.
Strap hoists are **NOT** designed to lift personnel.

! DANGER





This hoist is not an insulated hot line tool. This hoist must be used with appropriate length insulating link sticks if used in energized line work (see CHANCE® catalog for insulated link sticks that can be used with this hoist).

WORK AREA SAFETY

- a. **DO NOT** allow hoist to come in contact with an electrical source. Tool is not insulated, and contact will cause electrical shock.
- b. **Keep work area clean and well lit.** Cluttered or dark areas can lead to accidents.
- c. **Keep bystanders, children and visitors away from the strap hoist and the load.** Distractions can cause you to lose control. Always protect others from overhead loads.
- d. **NEVER** walk or stand under a suspended load.  
- e. **NEVER** operate this hoist if you are not familiar with how the hoist works.
- f. **NEVER** use a hoist as a load binder.
- g. **NEVER** use a hoist beyond rated capacity.
- h. **NEVER** use replacement parts other than those supplied by Hubbell/ CHANCE® or Bevins.
- i. **NEVER** use a cheater or extend the handle on the hoist.



WORK AREA SAFETY (cont.)

- j. NEVER allow the strap to come in contact with any object.
- k. NEVER use the hoist if the pull is not hook-to-hook straight line.
- l. NEVER leave a load suspended in the air.
- m. NEVER use a hoist as a tow line.
- n. NEVER use a hoist that is worn or malfunctioning.
- o. ONLY use hoist in ambient temperature range of -10°C to +50°C (14°F to 122°F).
- p. ALWAYS wear personal protective gear when using hoist.  
- q. NEVER use hotstick ring to bear load. Ring is only rated to support load of the tool.

You should ALWAYS operate the hoist from a safe position when lifting a load.

The safe positions are BESIDE the hoist and NEVER under the load. These safe positions will help prevent the load from striking you if the load falls.

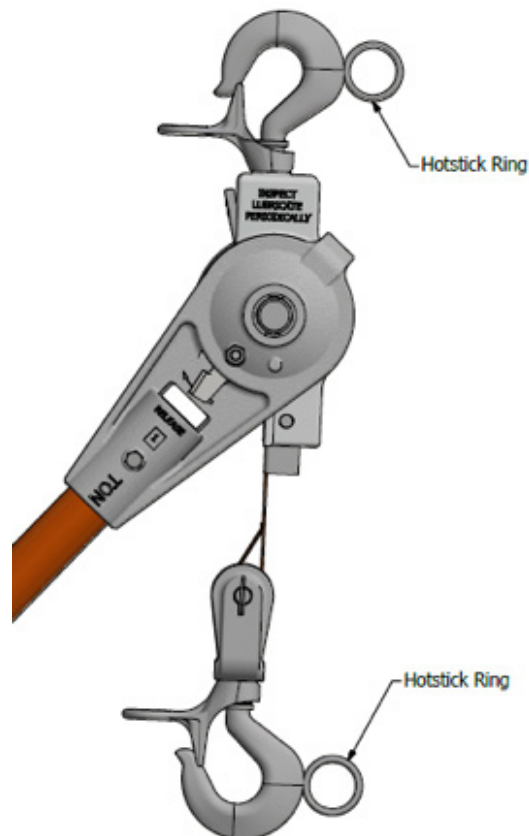
Refer to A.S.M.E. Standard 30.21 for more information on operation, maintenance, and testing of this hoist.

MAXIMUM LOAD RATINGS

PSC3090323CE - 1/4 Ton (500 lbs. / 227 kg)

PSC3090323 - 1 Ton (2000 lbs. / 907 kg)

PSC3090467 - 1 Ton (2000 lbs. / 907 kg)



OPERATING INSTRUCTIONS

Considering the Work Area:

Based on the job to be accomplished, the structure to which the hoist is to be attached, and the type and weight of the load to be moved, determine the position and how the hoist is to be attached.

CAUTION

Once the load is lifted into position, the "SHIFT KEY" must be in the "UP" position for holding the load. This will help prevent accidental lowering of the load.

The strap may be quickly extended to hook to a load by operating the "RELEASE LEVER" on the handle with the "SHIFT KEY" in the "DOWN" position.

The handle may be operated in one of two positions on this hoist. To move the handle from one side to the other, with no load on the hoist, operate and hold the "RELEASE LEVER" while swinging the handle through the "6 o'clock" position to the other side.

The strap is painted red near the spool end.

WARNING

- Never load the hoist when the red paint on the strap can be seen.
- Always inspect the hoist for wear, damage, and proper operation before each use.

If accessories, such as slings, wire grips, or link sticks are used with the hoist, the rated working load of these items must be equal to or greater than the load.

Lifting Loads:

Based on the job to be accomplished, the structure to which the hoist is to be attached, and the type and weight of the load to be moved, determine the position and how the hoist is to be attached.

WARNING

The hoist must be positioned so the load hook and the housing hook are in a straight line pull. The strap and/or housing must not be forced out of line, which could cause binding or damage to equipment. The handle and controls of the hoist must be free to operate and must not contact objects which could cause the controls to move or damage the hoist.

The load must seat in the hook so the load is in line with the shank of the hook and centerline of the strap. DO NOT LOAD HOOKS ON THE POINT.

The safety latches must be closed to secure the hook and prevent accidental loss of the load. NEVER ALLOW THE LOAD TO BEAR ON THE SAFETY LATCHES.

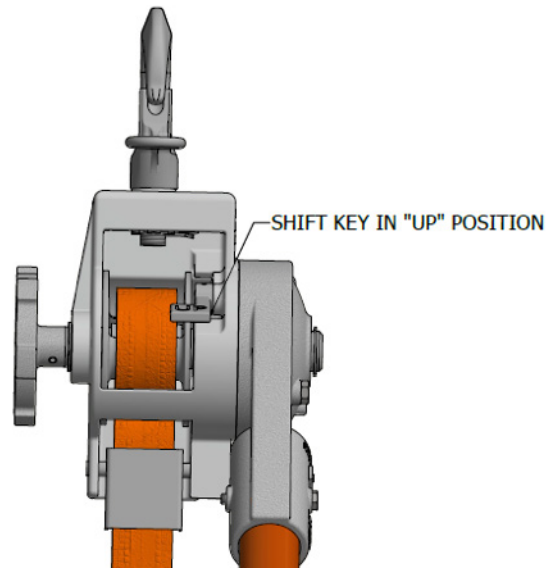


⚠ WARNING

- The hoist is intended for industrial or utility use and is NEVER to be used for lifting people or loads over people.
- Make sure the work area is clear of all unnecessary equipment and personnel before moving a load. Personnel and equipment should be moved clear of the area in case the load falls.

The hand wheel, located on the side of the hoist, may be used to quickly take up the slack strap prior to lifting the load. Move the "SHIFT LEVER" to the "UP" position and rotate the wheel.

Lift the load by moving the handle in full, even strokes. Do not slam or jerk the handle. If excessive force (more than **124 lbs (556 N)** for PSC3090323CE, or more than **150 lbs (667 N)** for PSC3090323 or PSC3090467) is required to operate the handle, the hoist is probably overloaded. Check the load and/or rigging before proceeding. If the load is greater than the rating of the hoist, **DO NOT LIFT THE LOAD.**



⚠ WARNING

Never overload the hoist. Never use a cheater or extend the handle.

Lowering Loads:

⚠ CAUTION

Never let the hoist self-ratchet or the handle fly loose. The quickly moving handle can cause injury, and self-ratcheting will damage the hoist and can cause injury.

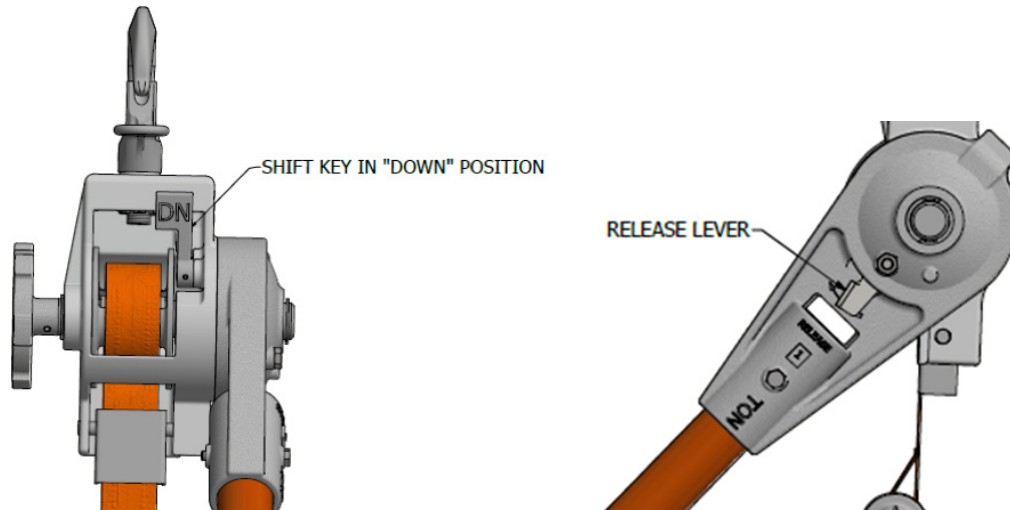
Holding onto the handle, set the "SHIFT KEY" to the "DOWN" position. Operate the handle until the "WORKING DOG" engages the ratchet wheel tooth. Additional pressure on the handle in the same direction will release the "HOLDING DOG". While maintaining control, slowly move the handle in the opposite direction; lowering the load until the "HOLDING DOG" engages the ratchet wheel. The "WORKING DOG" will then release, allowing the operator to repeat this movement to lower the load.

When the load is completely off the hoist, the "RELEASE LEVER" may be operated to extend the strap for unhooking.

⚠ WARNING

Never operate the "RELEASE LEVER" while the hoist is loaded.





CARE STORAGE & MAINTENANCE

CHANCE® hoists will give many years of satisfactory performance if used and maintained properly. Always hang the hoist freely with a straight line between the housing hook and the load hook. **DO NOT JAM THE HOIST OR STRAP AGAINST ANY OBJECT.**

The CHANCE® hoist is easy to maintain. Years of life will be added to the hoist by applying the following recommendations.

1. **DO NOT** use the hoist if it does not operate properly or is damaged in any way.
2. **DO NOT** allow the strap to be pulled over any sharp edge or wrapped around a pole or crossarm. Always use a sling or other means of attachment.
3. Stop pulling before the load hook is pulled tight to the housing. Continued pulling into the housing may damage the hoist.
4. **NEVER** allow the handle to fly free or the hoist to self-ratchet.
5. **NEVER** throw or drop the hoist.
6. Keep the strap clean. Inspect the strap and hoist before each and every use. Do not use a hoist if the strap is frayed, cut, or damaged.
7. All hoists must be periodically cleaned, inspected, and re-lubricated. Intervals will depend on usage and operating conditions. The oilite bearings must be lubricated with 30 wt. oil. All other moving parts must be lubricated with a film of light grease.
8. Extra care must be used when lowering a light or "bouncing" load such as a span of conductor. If the handle is "flipped", the hoist can self-ratchet which causes severe wear on the dogs, ratchet teeth, and stop areas of the hoist.
9. When operating the handle, do not "slam" the handle. A smooth, steady pressure in each direction moves the load efficiently and does not cause damage to the equipment.
10. Store in clean and dry location out of direct sunlight. Avoid areas where extreme temperatures are present. **DO NOT** store where moisture, oil, caustic chemicals or their vapors or other degrading material may be present. Equipment that is damaged or awaiting inspection by a trained individual should not be stored with in-use strap hoists. Heavily soiled, wet, or contaminated hoists should be cleaned and dried before storage and each use.



DISASSEMBLY INSTRUCTIONS

WARNING



- **Do not attempt to clean the strap. If the strap is dirty or contaminated, it must be replaced.**
- **Always wear safety glasses and other appropriate protective equipment during the following procedures. Use the correct tools for the operations being performed.**

In order to best visualize these instructions, study and refer to the exploded view of the hoist and parts list.

1. Remove snap ring from shaft.
2. Push "Release Key" located in the indented area of the handle in the direction marked "Release" to disengage the working pawl from the unloader plate and lift handle off the shaft. This will expose the mechanism.
3. The working pawl, in the handle, may be removed by first removing the screw and washer from the post supporting the pawl. The torsion spring may be removed after the pawl has been removed.
4. When reassembling working pawl and spring, place the short leg of the spring against the pin on the pawl, and the long leg of the spring against the handle housing. This should move the pawl towards the center of the housing.
5. If necessary to replace the pawl post or release key, remove nut, press the pawl post out of housing with a careful and steady force. When replacing the new pawl post, be certain it is pressed in straight, using an even pressure, and that the release key is in position before pressing post into housing. Install nut, tighten securely.
6. The holding pawl on the main body can be removed by unhooking the two extension springs from the unloader plate and from screw in the housing. Remove snap ring and slide unloader plate off shaft after which pawl can be lifted off post.
7. When replacing the holding pawl, make sure the pin which is permanently secured to the pawl is faced to the outside, so that it projects through the hole in the unloader plate.
8. To remove ratchet shaft, remove hand wheel roll pin, hand wheel and snap ring. Then remove two web anchor screws, web clamp and nylon web assembly. Next, remove the spool by driving out pin. Shaft will now slide out of the housing.
9. If the top hook or safety latch is damaged, the hook/housing must be replaced as a unit. The new housing has all required bearings installed.
10. The Up & down lever (shift key) is removed by removing the roll pin holding the reversing rod to the shift key.
11. The oilite bearings can be replaced in the accepted practice of pressing them out and pressing the new ones in, using appropriately sized bushing drivers.



INSPECTION

- Thoroughly clean all metal parts with solvent and dry. The Epoxiglas® handle can be cleaned and refinished as any CHANCE® hot line tool. Refer to CHANCE® catalog for supplies.
- Inspect the strap for any signs of wear, torn threads, or torn stitching, frayed edges, or cuts. Discoloration is a sign that the strap should be replaced. If there is any doubt about the integrity of the strap, replace it.
- Inspect all metal parts for wear. This includes rounded edges, elongated holes, worn pins, or battered areas caused by impacts. All castings should be inspected closely for cracks or other signs of damage. Replace any parts that do not appear normal.
- Look carefully at the spool where the strap winds for signs of crushing caused by severe overloading.
- Inspect the hooks for bending or opening of the hook throat. Safety latches must be in place and working properly.
- Look at springs for stretching, bent hooks, or wear. Inspect the ratchet teeth for chipping or rounding.
- Inspect the oilite bearings in the housing for wear or elongation. Replace any questionable bushings; or if desired, replace the housing assembly.
- Inspect both the working dog assembly and the holding dog assembly for damage. Make sure the permanently attached pin is not bent or damaged in any way. This indicates the the hoist has been overloaded or allowed to self-ratchet.
- If any component of the hoist fails inspection, the hoist needs to be tagged “**DO NOT USE**” and removed from service until repairs and testing have been accomplished.

Recommended Inspection Frequency

Item	Before Each Use	Daily-Weekly	Weekly-Monthly	Monthly- Annually
Web strap	*			
Handle for bends, cracks, or other damage	*			
Hook Safety latch operation	*			
Hooks for cracks, deformation, and wear	*			
Operating function, raising, lowering.	*			
All metal parts for wear, corrosion or deformation.		****	***	**
Spool for strap		****	***	**
Springs for stretching, bent hooks or wear		****	***	**
Bronze bearings for wear or elongation.		****	***	**
Casting for cracks or other signs of damage.		****	***	**
Ratchet teeth for chipping or rounding		****	***	**
Dog assembly for bent pin or chipping/rounding of the tooth.		****	***	**

* Need to inspect item before each use
 ** Normal use - weekly usage

*** Heavy use - daily usage
 **** Severe use - daily usage and/or usage in severe weather conditions or usage under sever loading.



ASSEMBLY

After all worn or damaged parts have been identified and replaced; the hoist may be reassembled in reverse order of disassembly. All oilite bearings must be lubricated with 30 wt. oil. All sliding or moving parts must be lubricated with a film of light grease.

The hoist should not require great force to assemble, with the exception of installing pins. If parts will not fit together easily, it is likely that something is bent or damaged. Identify the problem before proceeding.

TESTING

After assembly, the hoist must be checked for proper operation and load tested.

Suspend the hoist from a support that can hold the test loads. With a load of 100 lbs. on the hoist, carefully raise and lower the load. The handle should be operated to rotate the spool at least one complete revolution, (ten teeth) in one tooth increments to ensure all teeth are tested.

A load equal to the rating of the hoist should then be raised and lowered in a similar manner. Attention to the operation of all controls and the action of the hoist during testing is essential to make sure the hoist is safe to return to duty. If the hoist passes the above tests, the hoist may be returned to service.

It is recommended that the user establish a procedure for the routine inspection, repair, and testing of this hoist, based on usage, to ensure a safe working environment.

Refer any questions about the use, application or testing of this hoist to:

Hubbell / Chance,
210 N. Allen St.,
Centralia, MO 65240,
Phone: +1 573-682-5521

For repair or repair parts, contact:

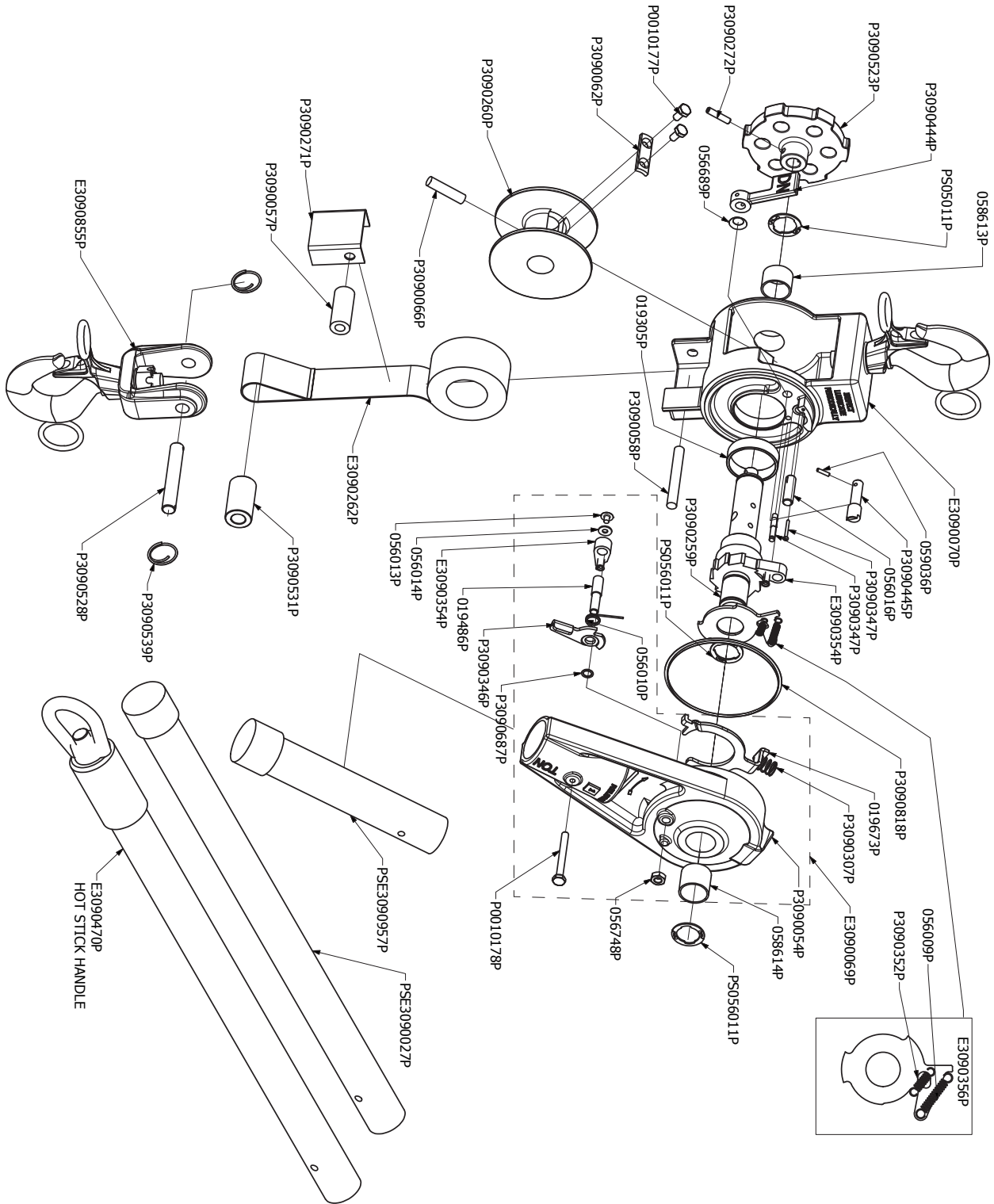
M.W. Bevins Co.,
9903 E. 54th,
Tulsa, OK 74145,
+1 918-627-1273
www.bevinsco.com



REPAIR PARTS LIST FOR CHANCE NYLON RATCHET HOIST

NOTE:

Because Hubbell has a policy of continuous product improvement, we reserve the right to change design and specifications without notice.



REPAIR PARTS LIST FOR CHANCE NYLON RATCHET HOIST

HANDLE BODY SUBASSEMBLY	E3090069P	#
Handle Body	P3090054P	
Oilite Bearing	058614P	Δ
Release Key	P3090346P	+
Pin	019486P	+
Spring	056010P	+
Handle Dog Subassembly	E3090354P	+
Washer	056014P	+
Screw	056013P	+
Stop Bolt	019673P	+
Spring	P3090307P	+
Jam Nut	056748P	+
Handle Bolt	P0010178P	

HOUSING SUBASSEMBLY W/HOOK	E3090070P	
Oilite Bearing**	058613P	Δ
Oilite Bearing**	019305P	Δ
Pin	056016P	

REMAINING PARTS

Strap Guide	P3090271P	
Strap Idler	P3090057P	
Strap Idler Pin	P3090058P	
Pin*	P3090347P	+
Strap w/Web Anchor	E3090262P	
Spool	P3090260P	
Split Rings	P3090539P	
Loop Pin	P3090528P	

Screw (Strap Anchor)	P0010177P	
Strap Clamp for Spool	P3090062P	
Yoke Spool	P3090531P	
Roll Pin	P3090272P	
Hand Wheel	P3090523P	
Snap Rings	PS056011P	+
Up & Down Lever (Shift Key Lever)	P3090444P	+
Spring Washer	056689P	+
Reversing Rod (Shift Key)	P3090445P	
Pin	059036P	+
Screw	056163P	+
Body Dog Assembly	E3090354P	+
Main Shaft Pin	P3090066P	
Main Shaft Assembly	P3090259P	
Unloader Plate Subassembly	E3090356P	+
Spring	056009P	+
Spring	P3090352P	+
Plastic Wear Strip	P3090818P	+
Lower Hook Assembly	E3090855P	

HANDLE SUBASSEMBLY

Handle (for CE marked hoist only, PSC3090323CE HOIST only)	PSE3090957P	
Handle (for standard hoist, PSC3090323 HOIST only)	PSE3090027P	
Handle (with butt swivel, for use with hotsticks, PSC3090467 HOIST only)	PSE3090470P	

+ Included in C3090349 Repair Kit

** Included in Housing Subassembly.

Δ Parts require lubrication with 30 wt. oil.

All parts inside dashed line box are part of handle body assembly.





DECLARATION OF CONFORMITY

We of:

Hubbell Power Systems, Inc.
210 North Allen Street
Centralia, MO 65202
United States
Tel: (573) 682-5521

Declare that this Product:
Nylon Strap Hoist (500 lbs./227kg rating)
Catalog Number: PSC3090323CE

Fulfills all relevant provisions of Machinery Directive 2006/42/EC and also fulfills all relevant provisions of:

- EN 13157 – Cranes – Safety – Hand Powered Cranes

The undersigned hereby declares, on behalf of Hubbell Power Systems, Inc. of Centralia, Mo, that the above-referenced product, to which the declaration relates, is in conformity with the above mentioned Directive and Safety Standard.

Signed by:

Name: Larry Bereswill
Position: Product Engineering Manager, Safety Products
Date: 04/03/2019



DISCLAIMER

These products should only be installed, used, or serviced by adequately trained personnel. These instructions are not a substitute for adequate training in the safe use of these products, and they do not address all situations that may be encountered when using these products. When using any product, always read and follow the installation and operating instructions and warnings for the product, all applicable federal, state, and local safety regulations, industry standards, and your employer's internal safety guidelines and operating instructions. Failure to follow applicable safety rules and instructions may result in serious injury, death, and property damage.

The user is responsible for the safe installation and use of any product, and must evaluate the conditions at the time of use and consult with their employer's internal safety guidelines or safety experts hired by your employer, as needed.

Hubbell Power Systems, Inc. is not liable for death, serious injury, or property damage resulting from the use of these products in any manner that is inconsistent with the product installation and operating instructions, your employer's internal safety guidelines, or recommendations from safety experts hired by your company.

If further information is desired or if particular problems are encountered which are not sufficiently covered in these instructions, contact Hubbell Power Systems, Inc. for additional information. Operating and installation instructions are available on the Hubbell Power Systems, Inc. website: hubbellpowersystems.com

